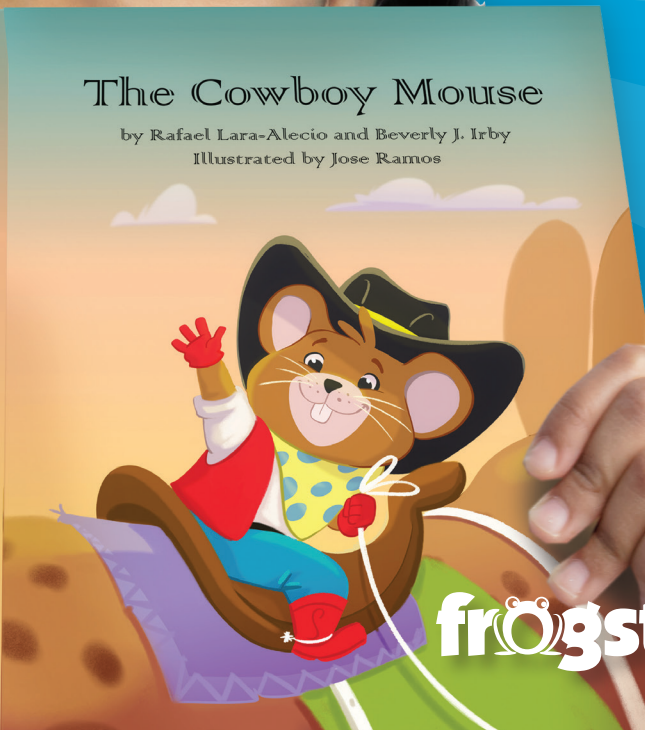
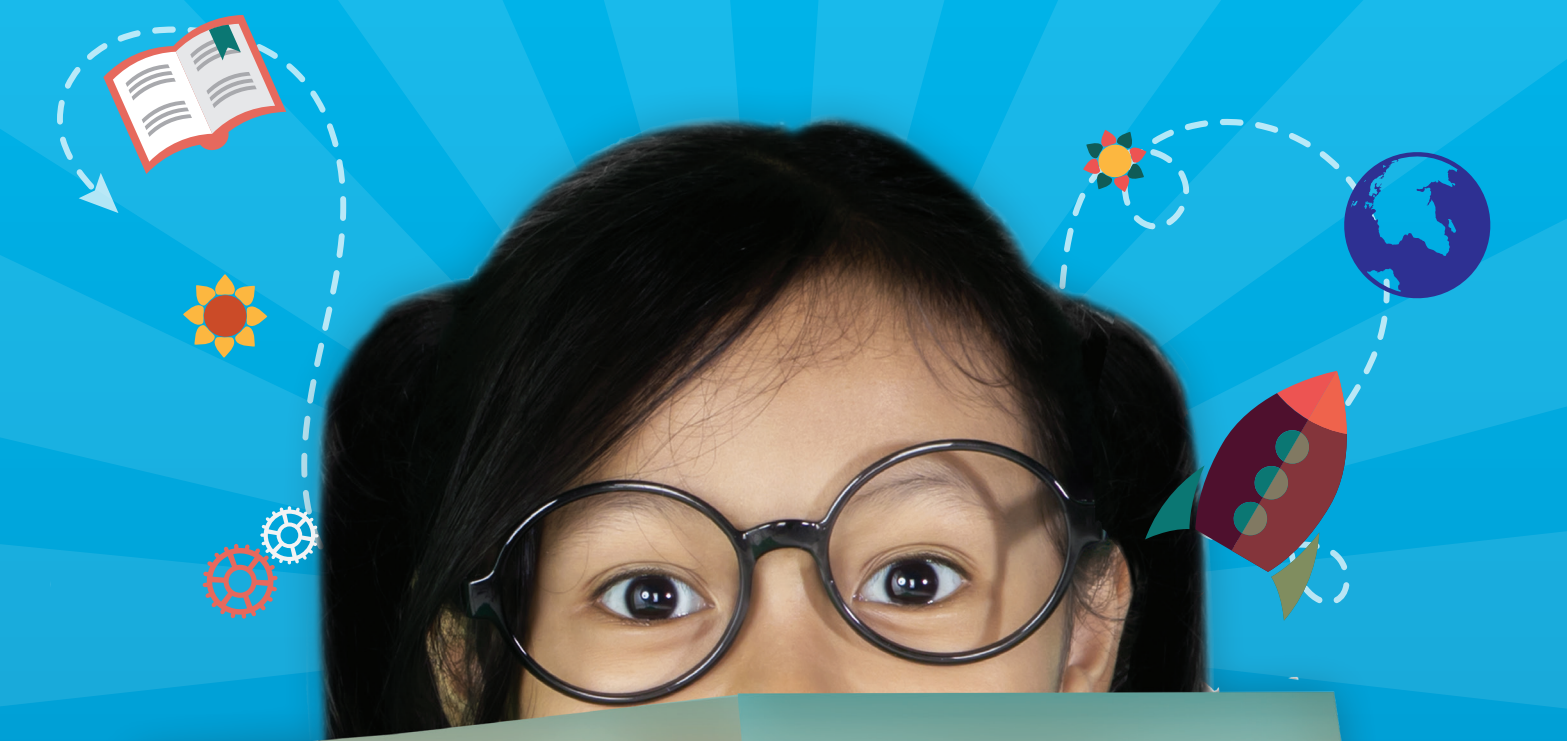


Grades K through 3

STELLA

Storytelling and Retelling and Higher-order Thinking for
English Language and Literacy Acquisition



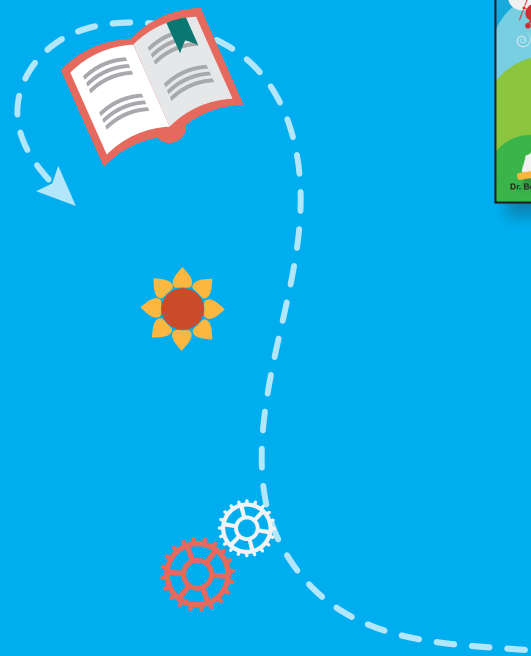
The Cowboy Mouse

by Rafael Lara-Alecio and Beverly J. Irby
Illustrated by Jose Ramos



STELLA is an evidence-based science-infused literacy curriculum, offering child-centered learning experiences with diverse literature to build strong academic vocabulary and oral and written language skills. A one-way dual language curriculum, **STELLA** nurtures children's natural curiosity of the world around them and includes Directed Maker Spaces and 21st century entrepreneurial skills development.

STELLA is designed to make learning natural with cross-linguistic transfer and increased retell fluency. **STELLA** uses repetition for listening comprehension effectively so that children can use their understanding of previously learned material to scaffold their understanding. **STELLA** addresses social-emotional and academic development with positive reinforcement, organization of thought, inductive thinking, goal-setting, reflection, and shared learning practices.



Features

Integrating literature and science, STELLA is organized into 28 five-day lesson plans which include:

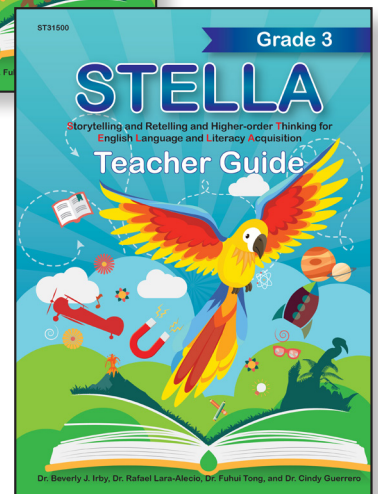
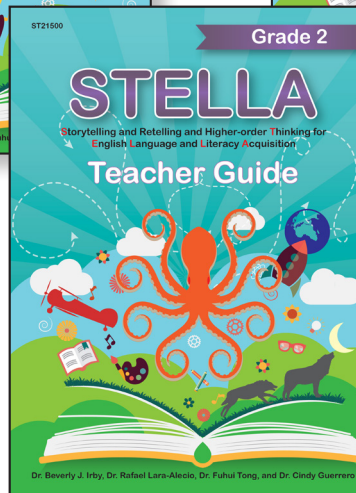
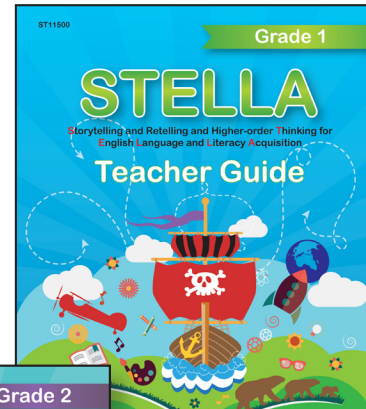
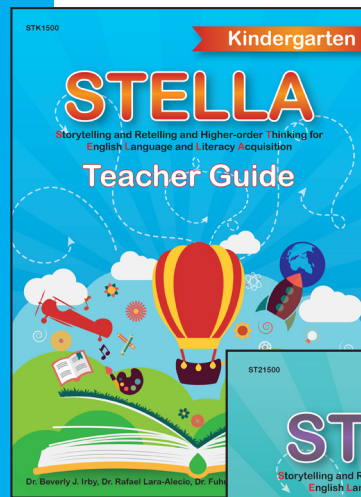
- research-based ESL strategies and higher-order level questions
- explicitly and implicitly taught academic vocabulary in the content area of science and social science
- language practice opportunities through story retelling, academic writing opportunities, and Directed Maker Spaces
- 21st century entrepreneurial skills development

Benefits & Research

This K-3 curriculum has proved to be highly effective across multiple randomized control trials conducted over the last ten years. Benefits of STELLA include:

- Acceleration of English learners' oral English acquisition
- Promotion of strategic first language clarifications to support Spanish
- Enhancement of students' self-esteem in English language acquisition
- Enhancement of students' performance in state English proficiency assessments

Students exposed to STELLA outperformed their comparison peers in story grammar elements in both English and Spanish and on state standardized assessments in reading in English.



Background

STELLA was developed by the *Center for Research and Development in Dual Language and Literacy Acquisition (CRDLLA)* in the College of Education and Human Development at Texas A&M University.

The Texas A&M System, through one of its member commercialization offices, Innovation Partners, licensed educational curriculum created from research. STELLA was developed by Dr. Rafael Lara-Alecio, Dr. Beverly J. Irby, Dr. Fuhui Tong and Dr. Cindy Guerrero, in partnership with Frog Street Press, LLC, an early childhood education publisher.

Meet the Authors and Contributors



Dr. Beverly J. Irby

Dr. Beverly J. Irby, Associate Dean and Regents Professor in the College of Education and Human Development and Director of the Education Leadership Research Center



Dr. Matthew Etchells

Director of Educational Outreach, Marketing and Communications, CRDLLA and Education Leadership Research Center (Project APLUS) ELRC & CRDLLA contact for STELLA



Dr. Rafael Lara-Alecio

Regents Professor and Director of the Center for Research and Development of Dual Language and Literacy Acquisition (CRDLLA)



Mrs. Tamra Walderon

Curriculum Coordinator for CRDLLA and ELRC



Dr. Fuhui Tong

Professor and Interim Department Head, Educational Psychology, and Co-Director (CRDLLA)



Dr. Cindy Guerrero

Director and Research Scientist, CRDLLA and ELRC (Project LISTO and VICTORY)

